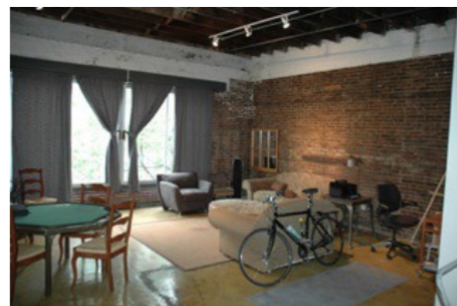


Complete Music Studios, Inc.  
227 St. Marks Ave  
Brooklyn, NY. 11238  
(718) 857 - 3175 <http://www.completemusic.com>



## STUDIO SPECS SHEET

### *Production Suite*



Our Production Suite consists of a main rehearsal room, a lounge and a private bathroom. South facing windows provide lots of sunlight, and private phone and internet make to cover all your bases. A third adjacent room is available for audio separation.

\$1450/day includes Studio, Lounge, Mixroom, Kitchenette and Private Bathroom with Laundry.  
-Cam-Lok tie in \$100/day.

#### Specifications

- Room Size: 25' x 60' main room, 20' x 20' lounge, 20' x 20' mixroom/kitchenette. 2300 sq ft total.
- Ceiling Height: 12'
- Power: (5) 20 amp circuits, 70 amp 3 phase Cam-Lok tie-in available.
- Lighting: 6 flood light tracks w/ dimmers.
- Console: [Behringer x32](#). 32 Mic Pre's, 16 XLR Outputs. Full onboard effects.
- FOH/Sidefill speakers: 3 Way [Yorkville TX-4](#) system. Two [Yorkville TS9s](#) 2x18" subs.
- Monitors: (3) [Yorkville TX-2M](#) Wedges on (2) Mixes. Additional [Yorkville TX-2M](#) or [Clair Brothers 12am](#) mixes available.
- Microphones: [Shure SM58](#) mics and [Shure PG52](#) Kick Mic. Assorted other mics available.
- Guitar Amps: [Fender Twin](#), [Marshall JCM900](#) half stack, [Roland JC120](#), [Vox AC30](#), [Mesa Boogie Dual Rectifier](#).
- Bass Rig: [Eden WT800](#), two 4x10' cabinets
- Drums: [Yamaha Recording Custom](#) 22' kick, 12' 13' 16' toms and 14' snare. Sabian cymbals.
- Keyboard: [Yamaha MOXF8](#) included. [Yamaha Motif ES8](#), [Korg Triton Pro](#) 71 key synth, [Korg Triton Extreme](#), [Roland FP7](#) available for rental.

Complete Music Studios, Inc.  
227 St. Marks Ave  
Brooklyn, NY. 11238  
(718) 857 - 3175 <http://www.completemusic.com>



## ***Production 1 / Showcase Studio***



Production 1, our Showcase Studio, includes a 30x16 stage, FOH mix position, full back line and concert PA with 4 monitor mixes.

\$900/day, \$90/hr with a 5 hour minimum. Cam-Lok tie \$100/day.

\*UP TO 20 PPL ONLY\*

### **Specifications**

- Room Size: 40' x 30' with a 30' x 16' stage. 1200 sq ft total.
- Stage Height: 22"
- Ceiling Height: 12'
- Power: (12) 20 amp circuits, 70 amp 3 phase Cam-Lok tie-in available.
- Lighting: 4 flood light tracks w/ dimmers.
- Console: [Behringer x32](#). 32 Mic Pre's, 16 XLR Outputs. Full onboard effects.
- FOH/Sidefill speakers: 4 Way [Yorkville TX-8](#) system. 2x18" TX8s subs.
- Monitors: (5) [Yorkville TX-2M](#) Wedges on (4) Mixes. Additional [Yorkville TX-2M](#) or [Clair Brothers 12am](#) mixes available.
- Microphones: [Shure SM58](#) mics and [Shure PG52](#) Kick Mic. Assorted other mics available.
- Guitar Amps: [Fender Twin](#), [Marshall JCM900](#) half stack, [Roland JC120](#), [Vox AC30](#), [Mesa Boogie Dual Rectifier](#).
- Bass Rig: [Eden WT800](#), two 4x10' cabinets
- Drums: [Yamaha Recording Custom](#) 22' kick, 12' 13' 16' toms and 14' snare. Sabian cymbals.
- Keyboard: [Yamaha MOXF8](#) and [Roland FA-06](#) included. [Yamaha Motif ES8](#), [Korg Triton Pro](#) 71 key synth, [Korg Triton Extreme](#), [Roland FP7](#) available for rental.

Complete Music Studios, Inc.  
227 St. Marks Ave  
Brooklyn, NY. 11238  
(718) 857 - 3175 <http://www.completemusic.com>



## ***Production 2 & 3***



Production 2 & 3 are identical Production Rooms which include full backline, Production PA with 2 monitor mixes and a 16 channel digital console with all onboard effects. A Weber baby grand Piano is available upon request.

\$600/day or \$60/hr with a 2 hour minimum.

\*UP TO 12 PPL TOTAL\*

### Specifications

- Room Size: 30' x 20' with 10' x 15' sound wing. 750 sq ft total.d
- Ceiling Height: 10'
- Power: (8) 20 amp circuits.
- Lighting: 2 flood light tracks w/ dimmers.
- Console: [Yamaha LS9-16](#). 16 XLR inputs, 8 XLR Omni Outputs. Full onboard effects.
- FOH/Sidefill speakers: 3 Way Yorkville TX-4 system. 2x18" subs.
- Monitors: (3) [Yorkville TX-2M](#) Wedges on (2) Mixes. Additional [Yorkville TX-2M](#) or [Clair Brothers 12am](#) mixes available.
- Microphones: [Shure SM58](#) mics and [Shure PG52](#) Kick Mic. Assorted other mics available.
- Guitar Amps: [Fender Twin](#), [Marshall JCM900](#) half stack, [Roland JC120](#), [Vox AC30](#), [Mesa Boogie Dual Rectifier](#).
- Bass Rig: [Eden WT900](#), two 4x10' cabinets
- Drums: [Yamaha Recording Custom](#) 22' kick, 12' 13' 16' toms and 14' snare. Sabian cymbals.
- Keyboard: [Yamaha MOXF8](#) and [Roland FA-06](#) included. [Yamaha Motif ES8](#), [Korg Triton Pro](#) 71 key synth, [Korg Triton Extreme](#), [Roland FP7](#) available for rental.

Complete Music Studios, Inc.  
227 St. Marks Ave  
Brooklyn, NY. 11238  
(718) 857 - 3175 <http://www.completemusic.com>



## **Standard Rehearsal Rooms A, B & C**



Standard Rehearsal Rooms are equipped with a full backline, and stereo PA with subwoofer.

\$360/day or \$36/hr. \$31/hr if you start on or before 3p.

\*UP TO 8 PPL ONLY\*

### Specifications

- Room Size: 19.5' x 18' for a total of 350 sq ft.
- Ceiling Height: 10'
- Power: (4) 20 amp circuits.
- Lighting: 1 flood light tracks w/ dimmers.
- Console: [Yorkville AP812](#). (8) XLR inputs and (2) stereo 1/4" channels. Digital onboard delays/ reverbs.
- FOH/Sidefill speakers: 2-way [Yorkville E12](#)'s and a [Yorkville LS200P](#) 1x18" subwoofer.
- Microphones: [Audix OM2](#) vocal microphones are included.
- Guitar Amps: [Fender Twin](#), [Marshall JCM600](#) combo, [Peavey Classic 50](#) 2x12", [Traynor YCV50Blue](#) Reverb 1x12".
- Bass Rig: [Gallien Kruger 700RB](#) head and Gallien Kruger 4x10 cab
- Drums: [Yamaha Recording Custom](#) 22' kick, 12' 13' 16' toms and 14' snare. Sabian cymbals.
- Keyboard: [Roland FP7](#) 88 weighted key keyboard with sampled sounds. [Yamaha Motif ES8](#), [Korg Triton Pro](#) 71 key synth, [Korg Triton Extreme](#), or additional [Roland FP7](#)'s available.